

DESCRIPTION

The exit is also equipped with a **WASTE EJECTION** and **OPENING DEVICE**.

Quick changeovers are facilitated by fixed references. When die-cutting, nicks between the cut product and the waste are not required, thereby making the execution of the job easier and more precise, consequently improving in quality. Operation is by touch-screen panel with pictogram control. By using the interchangeable steel die plate and always keeping the same centred references, the execution of repeated jobs is simplified.

Ideal for processing light and heavy paperboard.

Height of pile at the in-feeding: 1000 mm. Including pallet height.

Process possibilities: cutting, creasing, embossing, blind embossing (Braille), Kiss-cut applications including stickers.

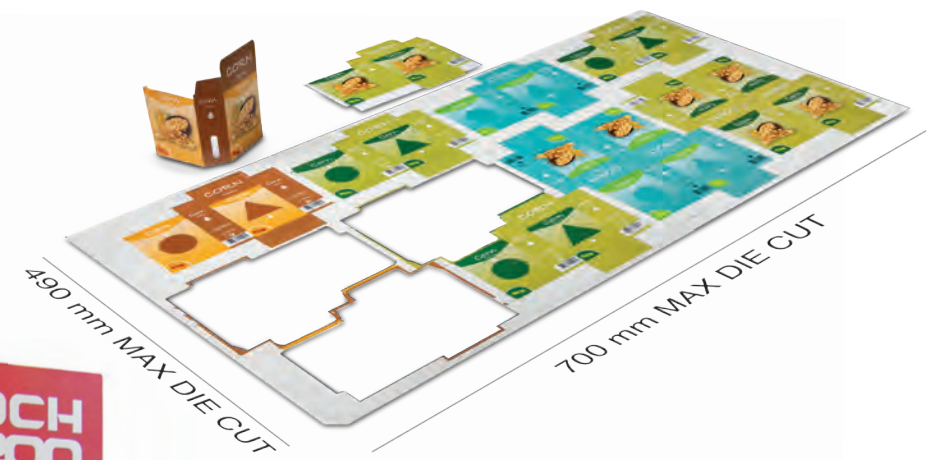
OPERATION

The unit works horizontally, with sheet transport to the die-cut station achieved by the means of the driving clamps. This innovative method ensures excellent quality and results, and adds more value to the finished job. **DCH200** allows both the traditional way of die cutting a full sheet and our proposal of die cutting by **MULTISHAPE** on the same sheet. This way reduces setting time, cost of the die cutting tool and patching time. Thus the unit is particularly suitable for use by printers who will satisfy the die cutting market needs from small to medium runs.



• HIGH PILE FEEDER
(Height of pile 1 m. including pallet height)

• DIE CUTTING UNIT



• WASTE EJECTION
• OPENING DEVICE
• EXIT BELT

- Compact automatic die-cutter, robustly constructed.
- NO STOP production.
- Short set-up times and easy make-ready.



TECHNICAL DATA

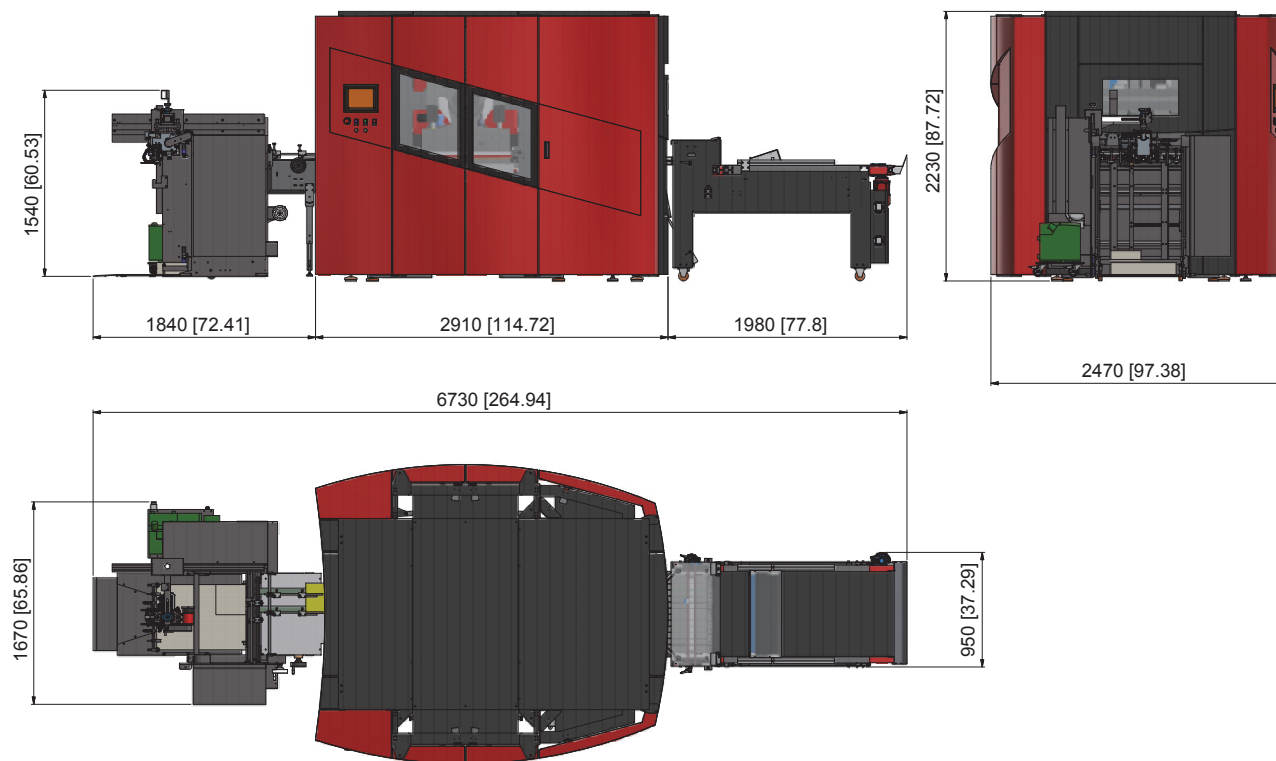
Max. Die Cutting size	490 x 700 mm
Min./Max. Waste:	
running direction waste	min 9 mm
side waste	min 9 mm
Max Paper size	530x1000 mm
Min./Max. paper-cardboard thickness	100 ÷ 800 g/m ²
Corrugated board thickness	up to 1500 gsm
Registration	mechanical
Option	auto-register by print marks read
Installed Power complete line	12 Kw
Cutting Force: paper - cardboard	2MN
Max. machine output	1300 sheets/hour
Compressed air requirement (to be supplied by the customer)	100 l/min at 6 bar.
Supply Voltage (Neutral and Earth must be separate; if this is not possible, an Isolation Transformer will be required at extra cost)	3PH, 400 V + N + T, 50 Hz.



I T A L I A N C U S T O M D E S I G N

DCH 200

AUTOMATIC DIE CUTTER FOR PAPERBOARD



www.scsautomaberg.com



SCS Automaberg srl

via Maestri del Lavoro, 33 - 24060 Brusaporto (BG) - ITALY
tel. +39 035 682480 - fax +39 035 686029

SCS-DCH200-UK Rev. 0917

FINISHING
FIRST